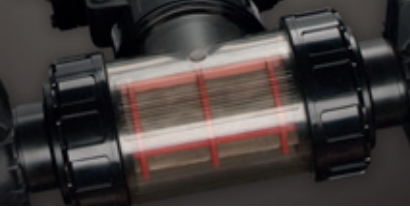




Fluid conduction and filtration





Filtmaster



FILTMASTER

The most efficient, versatile and profitable filtering tool.

- Efficiency: The application of the most advanced technology results in a higher level of filtering performance.
- Versatility: The wide modular capacity of its components allows its perfect use for any kind of water in both agricultural and industrial applications.
- Profitability: The design of its components optimizes the cleaning process with lower energetic costs.



Range

- Filters 3/4", 1", 1 1/4" and 1 1/2" available in 100 or 130 microns (screen/discs).
- Filters in 2" standard, 2", 2" large, 3", 3" double body and 4" double body available in 25, 50, 100, 130 and 200 microns (discs) and 100, 130 microns (screen).
- Automatic filters in 2", 3", 3" double body and 4" double body with a wide range of filtration degree for any kind of water.

Filtration stations

Their compact design guarantees a uniform filtering and cleaning for each filtering unit, lowering energetic costs thanks to continuous filtration during cleaning process. Maximum of profitability while there are not cleaning stops. Can be applied to any kind of water source thanks to the wide range of filtration degrees and to any flow requirement thanks to the modularity of the filtration stations.



JIMTEN offers you the Technical Department for advice, design or installation process of filtering stations for all applications.

MasterONE. Self-cleaning single filter equipment.

NEW PRODUCT

Self-cleaning single filter equipment available in 25,50,100,130 and 200 microns.

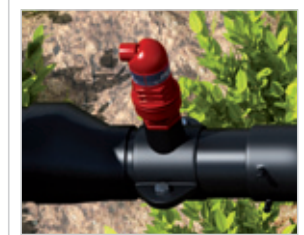


Air release valves X-294 and X-295

- Air release valves X-294 (double effect), X-295 (triple effect).
- Compact design.
- 3/4", 1", 1 1/2" and 2" models in NPT and BSP threaded connections.
- Nominal pressure PN 16 Bar.
- A single hydraulic locking for all the functions.
- Body and lower part manufactured in Polyamide.
- Lock joints made in EPDM.
- Floater made in Expanded Polystyrene.



Triple effect air release valve working in air admission/expulsion also being able to eliminate the pressurized air accumulated in the pipe system.



Triple effect high flow air release valve avoiding negative pressure in the system.



X-294
1 1/2" - 2"



X-295
1 1/2" - 2"



X-294
3/4" - 1"



X-295
3/4" - 1"

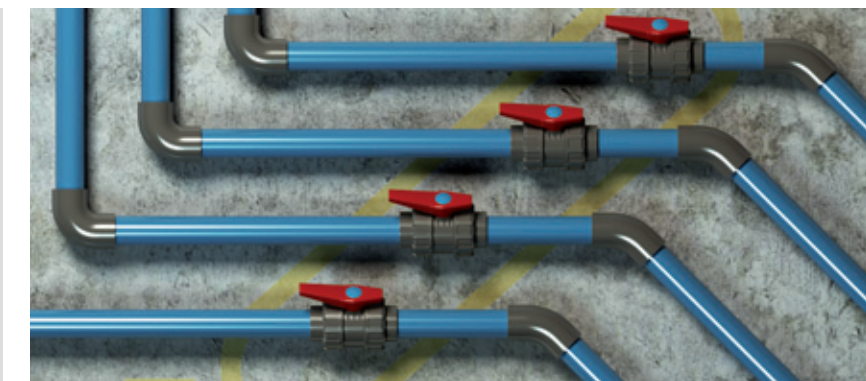


Double effect high flow air release valve working in air admission/expulsion.

Valves

Jimten presents a complete range of PVC and PP valves adapted to different applications for fluid conduction.

PN16 PVC ball valves, solvent socket, male threaded, female threaded, PE union, PE thermofusion connection, three-way PVC ball valves, industrial and actuated uPVC superior ball valves and butterfly valves.



PVC ball valves
20 to 125 mm



Three-way PVC ball valves
40 to 63 mm



PP ball valves
20 to 63 mm



uPVC actuated superior ball valves
20 to 63 mm



PVC butterfly valves
63 to 250 mm



Compression fittings for PE pipes GAMA 55

Fittings:

The GAMA 55 compression fitting range marks 30 years since its launching. Nowadays, with more than 300 million units installed, this range has become a quality and market leadership reference.

The GAMA 55 compression fittings for polyethylene pipe are certified according to the European standard EN 12201, certifying our products for PN 16 HDPE pipes.

Fitting
Gama'55

300 million
pieces
installed

30 years



Range



jimten, SA

CTRA. DE OCAÑA, 125 C.P. 03114
 ☒ 5285 C.P. 03080
 ☎ + 34.965.10.90.44
 ☏ + 34.965.11.50.82
 ALCANTE (ESPAÑA)
 www.jimten.com
 international@jimten.com

Empresa registrada según norma



ER-0084/1996



GA-1999/0156